

## Symbols and Their Meanings

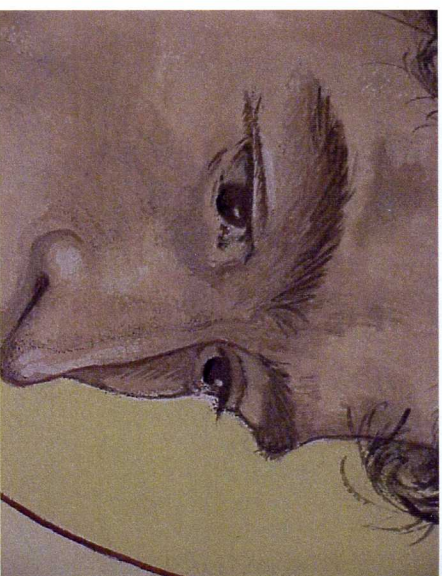
The shape of the mural repeats the stained glass windows on the east wall of the nave of the main church. The circle at the top represents the heavenly realm where Christ's perpetual sacrifice of his body on the cross is offered to the Father. The crucifix rests in a blanket of purple, symbolizing His royal priesthood and kingship.

The angels on either side of the crucifix reference the stain glass angels in the sanctuary of the main church. They are Beuronese in style and cover their faces at the horror of seeing their Lord hanging on the cross.



The large rectangle represents the earthly realm. Because of the blood Jesus shed on the cross (depicted in the red stripes), we in this realm participate in the royal priesthood (shown as the purple border) through our baptism (the blue border). The green blocks signify the grass on which the multitudes reclined. Green is a reminder of Spring and the upcoming Passover celebration which will end in Jesus' crucifixion.

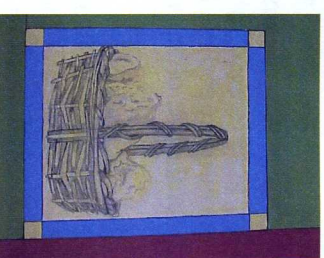
The central yellow panel is light. It is the place from which Jesus preaches. The figures in the panel are from John 6:8-13. St. Andrew, brother of Peter, introduces to Jesus a young boy with a basket of 5 loaves and 2 fish. Jesus is looking for a way to feed the people, but St. Andrew replies, "What are these for so many?"



Because of his doubt, he is shown with his head down, looking in disbelief as Jesus prays a blessing of thanks to God the Father over the food. The boy, however, looks up expectantly, faithfully waiting to see what the Messiah will do.



The twelve baskets are the twelve baskets of bread left over after everyone has eaten their fill. One basket for each apostle to continue Christ's ministry of feeding his people. For this reason each basket is unique, as each apostle, and indeed each of us, is unique.



The representational images begin toward the base with simple black lines depicting the fields in which Jesus was preaching. They move toward greater complexity in the black lines and values of the baskets. Still more developed are the central figures and angels in line, value and color. Finally the movement is complete at the top in the most complex form of the crucifix. This movement of line, value, color and form is symbolic of our own movement toward holiness as we too move upward toward the cross of Christ.

The paint is a mineral based paint. Only natural, non-toxic pigments are used. The pigments are painted onto and absorbed into the base. The colors become one with the base and the whole hardens like a rock. In the same way our faith as Christians is the "color" in our lives, not a surface skin, but integrated fully into who we are. Before Him we were plain, like the wall. But now in Christ, we come to life and are filled with a colorful message to share—the Good News that our Lord is alive and risen from the dead and that we too will one day rise with Him.